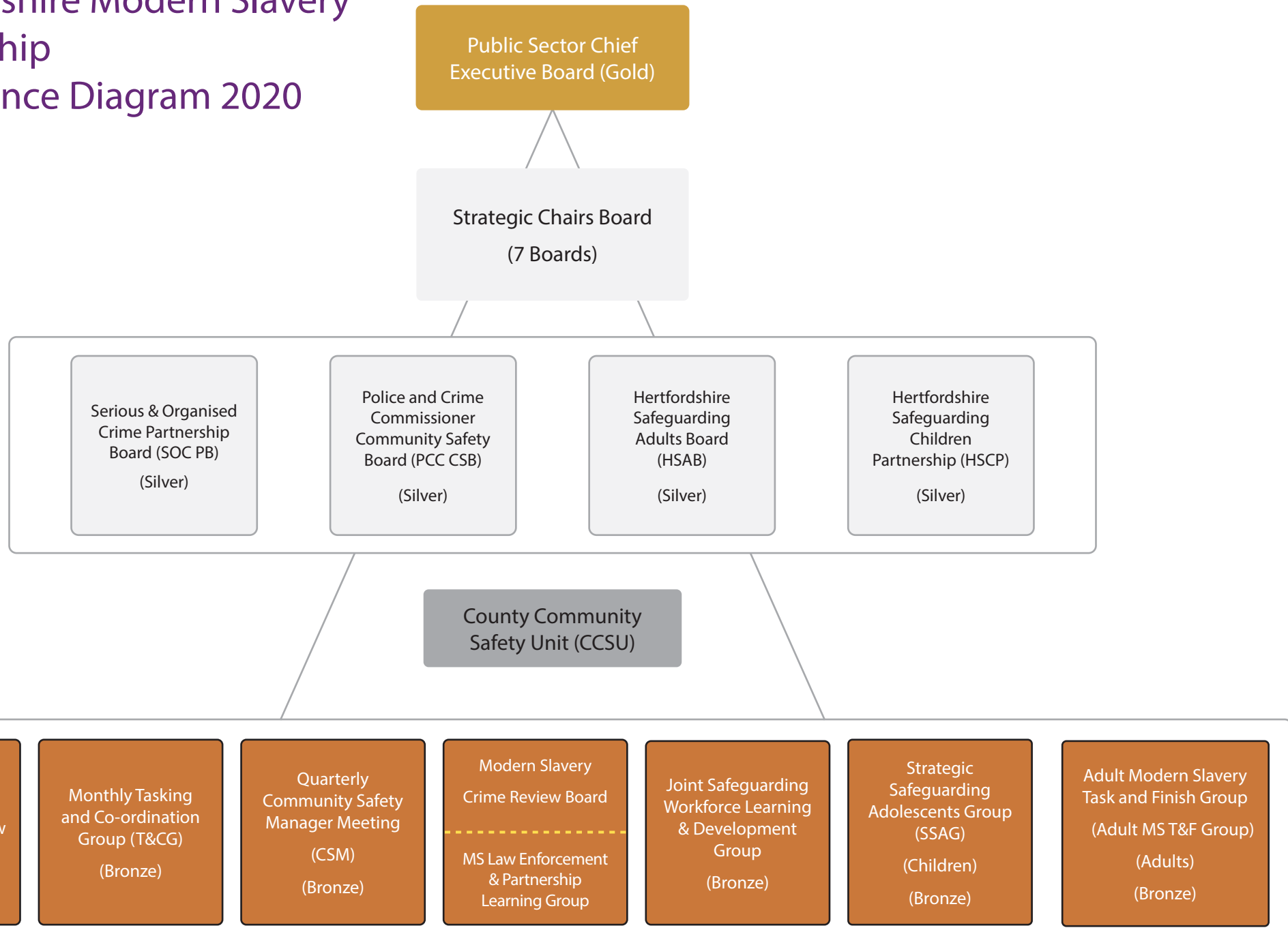
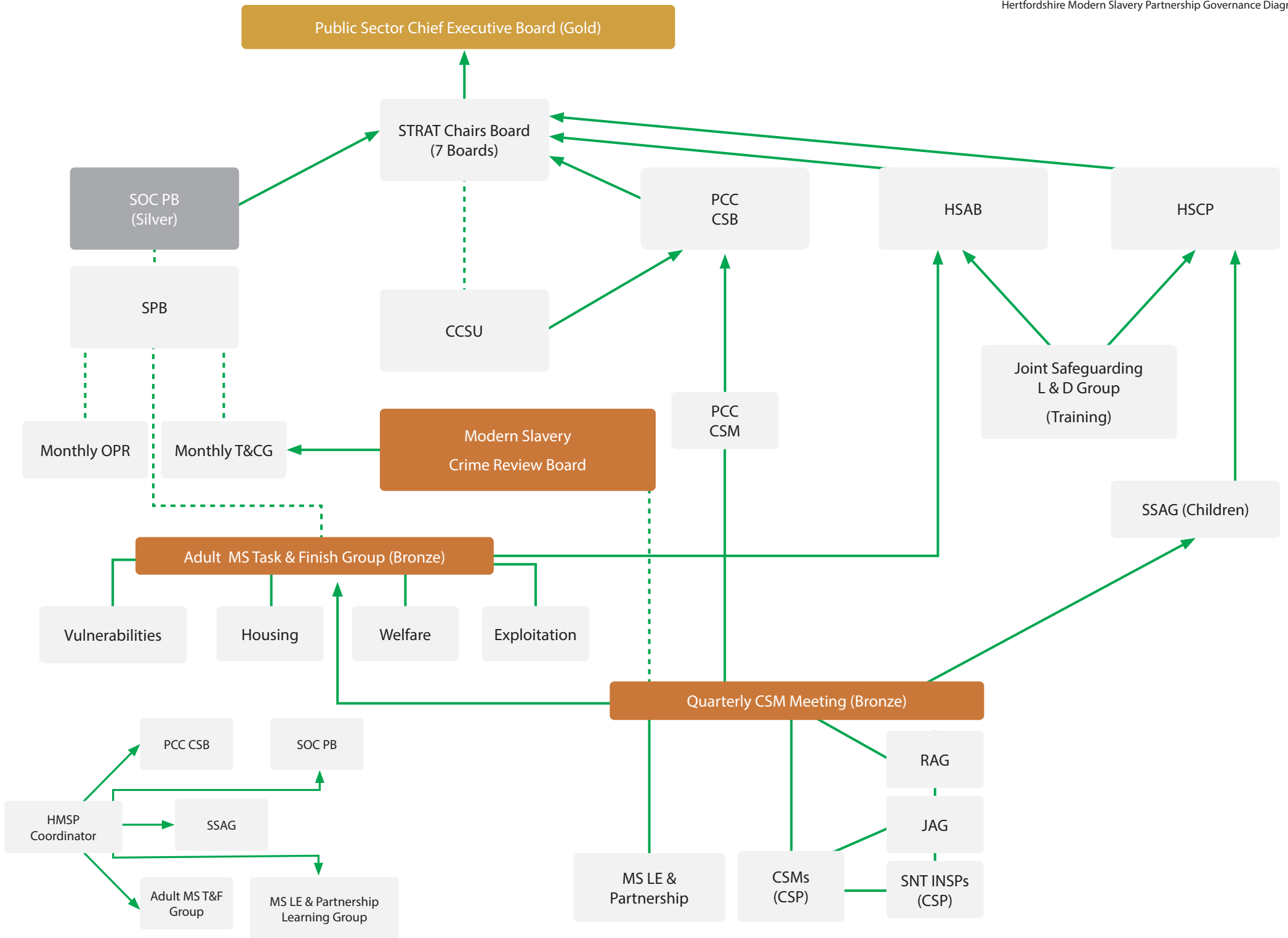


# Hertfordshire Modern Slavery Partnership Governance Diagram 2020





# Hertfordshire Modern Slavery Partnership Governance Diagram: Glossary of Terms

## GOLD

### 1. Public Sector Chief Executive Board (Gold):

A multi-agency board made up of chief executives from all local public sector organisations in Hertfordshire and meets to discuss key developments and challenges across the county.

## SILVER

### 1. Strategic (STRAT) Chairs Board:

This board is made up of the chairs of the seven strategic boards overseeing Hertfordshire in the following areas:

1. Safeguarding Children (Hertfordshire Safeguarding Children's Partnership)
2. Safeguarding Adults (Hertfordshire Safeguarding Adults Board)
3. Drugs and Alcohol
4. Domestic Abuse (Hertfordshire Domestic Abuse Executive Board)
5. Serious and Organised Crime (Serious & Organised Crime Partnership Board)
6. Community Safety (PCC Community Safety Board)
7. Integrated Offender Management (IOM)

### 2. SOC PB - Serious and Organised Crime Partnership Board (Silver):

A multi-agency board, which is responsible for the strategic delivery of anti-SOC/OCG activity across the partnerships, in order to fully develop and embed a whole systems approach to tackling this crime.

### 3. PCC CSB - Police and Crime Commissioner Community Safety Board (Silver):

A multi-agency board chaired by the Police and Crime Commissioner for Hertfordshire and meets quarterly to discuss key developments in community safety provision, as well as challenges and successes.

### 4. HSAB – Hertfordshire Safeguarding Adults Board (Silver):

A multi-agency board, which coordinates the activity of the various partner organisations in Hertfordshire to safeguard and promote the welfare and well-being of 'adults at risk'.

### 5. HSCP – Hertfordshire Safeguarding Children's Partnership (Silver):

A multi-agency partnership to facilitate all agencies and organisations who work with children and young people in Hertfordshire to work together to keep children safe.

### 6. CCSU – County Community Safety Unit:

A unit of co-located staff from police, fire and rescue, trading standards and county council that sits under the Community Protection directorate at HCC, collating data and information from local agencies, and producing community safety intelligence products based on the needs of the strategic boards.

The unit also produces an annual strategic assessment of crime trends for each of the ten Community Safety Partnerships and undertake ad hoc community safety data requests within their capacity where requested.

### 7. PCC CSM – Police and Crime Commissioner/Community Safety Manager's Meeting:

A regular meeting between the district and borough council community safety managers and the Police and Crime Commissioner for Hertfordshire to keep the Commissioner informed of key community safety developments and challenges identified in the county.

### 8. SPB - Strategic Performance Board

This board is the strategic meeting through which force demand, performance, risks, and governance of delivery against the Police and Crime Plan/Control Strategy are reported and managed at by the OPCC and Force Executive, attended by the senior strategic leads across Hertfordshire Constabulary.

**1. Monthly OPRG – Organisational Performance Review Group:**

This group looks at Hertfordshire Constabulary's organisational performance and crime statistics (types, increases, decreases, areas most affected) and is attended by all operational Chief Inspectors and department leads.

**2. Monthly T&CG – Tasking and Co-ordination Group:**

This group looks at operational demand impact on Hertfordshire Constabulary, as well as crime trends. It is attended by Chief Inspectors Superintendents and department leads.

**3. MS CRB - Modern Slavery Crime Review Board**

A police-led multi-agency board, which aims to ensure that all modern slavery investigations are completed to the required standard

**4: MS PLG - Modern Slavery Law Enforcement and Partnership Learning Group - :**

A multi-agency group, which looks to review multi-agency working in practice by identifying opportunities for increased collaboration and sharing best practice on modern slavery investigations and disruption activity.

**5. Adult MS T&F Group – Adult Modern Slavery Task and Finish Group:**

This group brings together statutory and non-statutory partners from across Hertfordshire to review barriers and identify solutions for supporting adult victims of modern slavery, with a view to making relevant recommendations to senior stakeholders.

**6. Quarterly CSMs Meeting – Quarterly Community Safety Manager's Meeting:**

This meeting is attended by local authority Community Safety Managers to discuss impactors on the CSP they manage initiatives, closure orders etc. It is also attended by the CCSU Chief Inspector/Inspector, and other relevant staff in the unit.

**7. CSMs (CSP) – Community Safety Managers (Community Safety Partnerships)**

Each district is overseen by a community safety partnership, which is led by local community safety managers in collaboration with the local policing team.

**8. SNT INSPs (CSP) – Safer Neighbourhood Team Inspectors (Community Safety Partnerships):**

The Safer Neighbourhood Team Inspectors regularly meet to discuss neighbourhood policing powers, policies, concerns, local trends. This meeting is chaired by the CSP neighbourhood policing lead and Chief Inspector CRCS.

**9. RAG – Regional Action Group:**

This group is an opportunity for all CSPs to consider policing priorities and joint working initiatives at regional level. This group is attended by all CSP Community Safety Managers, district representatives and CSP Chief Inspectors.

**10. JAG – Joint Action Group:**

This group is an opportunity for each CSP to consider policing priorities and joint working initiatives at district level. This group is attended by the CSP Community Safety Manager, local district representatives, local CSP Chief Inspectors.

**11. SSAG - Strategic Safeguarding Adolescents Group:**

This group provides a local framework in which all partner agencies can work together to collectively deliver the best protection for missing children, those at risk of exploitation, gang affiliation and county lines, through sharing best practice, improving data and intelligence collection and continuous monitoring of performance.

**12. Joint Safeguarding L&D Group - Joint Safeguarding Workforce Development Learning & Development Group (children and adults):**

This group is tasked with supporting the workforce in Hertfordshire to achieve the best possible safeguarding practice and that the safeguarding needs of children, young people and adults at risk are responded to by a confident, competent and effective workforce.